

PO Box 449
Ellendale, TN 38029

Alarm System DSL Filter Installation

The DSL Filter for your alarm system will need to be installed inside your alarm system control panel. The control panel is a large metal box containing the wiring, processor and battery back-up for your alarm system. It may be mounted in a closet, basement, or utility room. Some alarm system control panels require a key to unlock and open them.

Inside the control panel you will find the phone connection for your alarm system, consisting of a phone jack (usually beige) and phone cord that look like this:

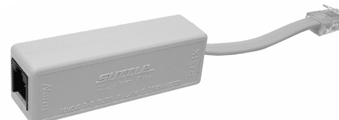


You will install the alarm-specific DSL filter in between the existing phone cord and jack as shown below:

Phone cord coming from
alarm circuit board



Alarm-specific DSL Filter



Phone Jack



If you have any questions concerning the installation of the DSL filter for your alarm system, please contact our office at 901-377-4991.